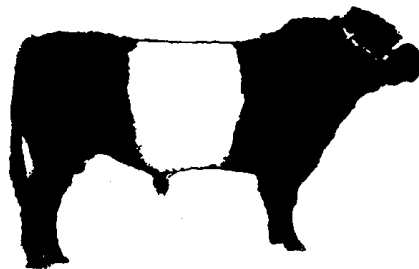


ACT & NSW

2011 Showing Season



AUSTRALIAN BELTED GALLOWAY ASSOCIATION INC.

ABN 64 054 638 602

Buying a Beltie?

Come meet the breeders!

Welcome to the 2011 ACT & NSW showing season!

With an excellent reputation for economically producing a superior quality of beef, farming Belted Galloways is a wonderful alternative to mainstream breeds. So why not consider them?

But where can you learn more, and go to see them?

Beltie breeders will be exhibiting at Maitland, Canberra, Bathurst and Sydney.

Cattle shows provide opportunities for top studs and new breeders to join up in creating awareness for the breed – and to be available to speak to you!

Attending will mean that you are able to inspect the cattle on the ground, and in many cases, compare Belties from different breeders, and even compare them to other breeds. This helps you to better determine the style of animal most suitable for you.

If you can't make it to judging days, the cattle are generally at these shows for two to five days – phone

the cattle administration office for precise dates.

Whether your need is stud or commercial stock, exhibiting breeders can answer many of your questions. Don't be shy – if exhibiting breeders can't supply you now, they can point you towards someone who can.

If your focus is on the commercial beef aspects, get along to the steer and carcass judging events at Sydney Royal. Belted Galloways have a history of remarkable performance in these events, consistently reinforcing the quality and value of its beef.

At last year's Sydney Royal, Belties placed again in the elite top 10% of carcasses for meat quality, as well as placing in the top ten earners at auction. We have our fingers crossed again for this year!

Don't forget to access our website year-round for even more Beltie breeders and what is for sale. Surf the site – there's plenty of Beltie info there.

So come along! Its fun, its friendly and, we hope, informative!

Francie MacLean

President, January 2011

Sydney Royal Show

Australia's Premier Show!

2011

♂ Stud Show ♂ Hoof & Hook Competition

14-27 April

Sydney Showground, Olympic Park

Your ABGA show contact:

Dennis Griffis ☎ 02 6550 6348

School steer Judging: Wednesday 13th April

Open Steer Judging: Thursday 14th April

Stud Judging: 4pm Sunday 17th April

Steer Carcass presentation: 8am Tues 19th April

For extra information on cattle events

Lucinda Crichton ☎ 02 9704 1159

www.sydneyroyalshows.com.au/cattle



PO Box 189, KIAMA NSW 2533 ☎ (02) 4232 3333 Fax (02) 4232 3350 Email anne@lbcentre.com.au

www.beltedgalloway.org.au

Canberra Royal 2011

25-27 February

Stud Show
Hoof & Hook Competition
ACT

Exhibition Park
Flemington Rd, Canberra

**...long an established
southern hub
for Belties...
...a traditional and
proven marketplace...
...a capital place
for a capital breed...**

Your ABGA show contact:
Dennis Griffis
☎ 02 6550 6348



Judging Day:
Saturday 26th February

Show administration enquiries
Marni Tebbutt
☎ 02 6241 2478
www.rncas.org.au

MAITLAND SHOW 2011

18-20 February

Stud & Led Steer Show
NSW

Maitland Showground
Blomfield Street, Maitland

**...a friendly show for
beginners to begin!...
...a convenient location
north of Sydney...
...a growth area
of Beltie farmers...
...a beef focused
Beltie community...**

Your ABGA show contact:
John Ford
☎ 02 4930 6067



Judging Day:
Saturday 19th February

Show administration enquiries
Betty McCarthy
☎ 02 4933 5052
<http://show.maitlandonline.com>

Bathurst Royal 2011

6-8 May

Stud & Led Steer Show NSW

Bathurst Showground
Great Western Highway,
Bathurst

**...Australia's largest
regional Royal show...
...ideal country
to run
Belted Galloways...
...the Central West...
where the Galloway
story began...**

Your ABGA show contact:
Andrew Monaghan
☎ 0417 686 455



Judging Day:
Friday 6th May

Show administration enquiries
Brett Kenworthy
☎ 02 6331 3175
www.bathurstshow.com.au

ABGA Belted Galloway Exhibitors

Here's a contact list of some of our studs who confirmed their NSW exhibiting commitments by last December – they will be more than happy to answer your questions on Belties!

And remember, lots more breeders around the country are listed on our website www.beltedgalloway.org.au

Faded ticks (✓) indicate a possibility of that stud's attendance

Stud	Breeder	Herd Location	Contact details	Maitland	Canberra	Bathurst	Sydney
Bekadan	Merv & Beth Presland	Windsor NSW	0427 942 152 bekadan@optusnet.com.au	✓		✓	✓
Cope Station	Brett Morschel	Gulgong NSW	0448 258 779 brett@copestation.com.au			✓	
Jandrew	Andrew Monaghan	Bathurst NSW	0417 686 455 thefrockmaker@yahoo.com.au			✓	✓
Linden	Ian & Jan Denny	Grabben Gullen NSW	02 4836 7312 jedenny@harboursat.com.au			✓	
New England	Francie MacLean	Mulla Creek NSW	02 6764 4264 franciemaclean@ozemail.com.au				✓
Sassafras	Jason & Kimberly Astbury	Wyong Creek NSW	02 4353 0707 kastbury@tpg.com.au	✓			✓
Temmygotcha	Anita Durham	Bedgeranbong NSW	02 6857 6645 temmygotcha@telstra.com		✓	✓	
Twin Oaks	Keith & Warren Edwards	Kangaloon NSW	02 9451 3990 warren@edco.com.au		✓		✓
Windcrest	John & Pam Ford	Stanhope NSW	02 4930 6067 windcrestford@bigpond.com.au	✓			
Wombledale	Peter & Sue Burgess	Peel NSW	02 6337 6535 wombledale@bigpond.com			✓	✓

Bekadan stud is also hoping to exhibit at

Castle Hill Show 1-3 April, 2011

www.castlehillshow.com.au and

Hawkesbury Show 13-15 May, 2011

www.hawkesburyshow.com.au

Cope Station stud will be exhibiting at

Mudgee Show 4-5 March, 2011

www.mudgeeshow.org.au

Sassafras stud will also be exhibiting at

Newcastle Show 18-20 March, 2011

www.newcastleshows.com.au and possibly

Gosford Show 30 April – 1 May, 2011

www.gosfordregionalshow.com.au

Windcrest stud will also be exhibiting

BULLS FOR SALE at

Total Field Days 29 April – 1 May 2011

www.tocalfielddays.com

Taste the beef!

2011 MAITLAND SHOW DINNER!

All this for just \$55!

Friday 18th February

Hors d'œuvres: Cherry Tomatoes stuffed w' meat kofta, Tripe crumbed, with haydar,

Vines leaves stuffed w' basmati rice and dried currants, Tartar of Beef and Kataifi Australian King Prawns

Entrée: Pastitsio, Greek style layered beef and pasta with béchamel sauce

Entrée: Beef, lemon and chick pea cabbage rolls in broth

Main: Slow braised beef w' leeks and fennel seed on carnaroli risotto

Cheese: Marook Farm, semi hard cheese, biscuits with poached dried figs

Dessert: Seph's Belgium Chocolate Tart with fresh apricot compote

Popular Peppercorn Belted Galloway beef

styled by renowned Hunter-region chef, Barry Meiklejohn!

Dinner prepayments to Terry & Karen Pierce (02) 6558 4227 or belties@belties.com.au

6.30pm for 7pm.

A fabulous night of food & company!

'Old Maitland Inn'

Fine Dining Room

279 New England H'way, Rutherford NSW

(2 hours drive north of Sydney)

www.oldmaitlandinn.com.au

Accommodation from \$120.00 per night

Full Breakfast Buffet - \$15.00 per person

Accommodation Bookings: (02) 4932 5255

Stud Stock for sale

These registered stock are for sale and will be exhibited somewhere during the 2011 NSW Showing Season. Contact the breeder for details.

Jandrew Eli 8769 (POIS) (MF)


Bull


Jandrew Belted Galloway Stud, Bathurst NSW

Andrew Monaghan 0417 686 455

Date of Birth 23/06/2009		Tattoo JAN E006		Coat Black-Belted	ABGA Grade A
Sire Peppercorn Rosco 482	Budawang Max GHB B382 Budawang Graduate 3379	Dam Wombledale Yamka 7473	Shiralee Rawhide 432 Wombledale Foxey Lady 7471	To be exhibited at Sydney Royal Bathurst Royal	

- 100% fullblood genetics
- Reserve Junior Champion Bull *Bathurst Royal 2010* (pictured at nine and a half months)
- Bull calf in the winning Sire's Progeny team (Peppercorn Rosco) *Sydney Royal 2010*
- 93.75% genetics of Jandrew Charles (2009 GA Belted Galloway Champion Carcase Shield for highest scoring Belted Galloway Carcass in 2008) and Jandrew Dudley (Eve Cullen Trophy winner for highest scoring Galloway or Belted Galloway carcass (7 exhibits) *Sydney Royal 2010*)
- DNA recorded, Pestivirus tested, Genestar tested
- Exceptionally docile temperament, easy to handle
- Frame Score 3-4 (124.5cm (50 ½") hip height at 18 months)



Jandrew Fry 9088 (POIS) (MF)				Open Heifer
Jandrew Belted Galloway Stud, Bathurst NSW				Andrew Monaghan 0417 686 455
Date of Birth 16/05/2010		Tattoo JAN E009		Coat Black-Belted
ABGA Grade A		To be exhibited at Bathurst Royal unless sold prior		
Sire Bekadan D'Artagnan 8492	Greenthorpe Ulysses 8485 Greenthorpe Vanessa 8486	Dam Jandrew Charlie Girl 8220	Peppercorn Rosco 482 Wombledale Yamka 7473	
<ul style="list-style-type: none">• 100% fullblood genetics• Sire was Senior Champion Bull <i>Sydney Royal 2010</i>• Dam was Grand Champion Female <i>Bathurst Royal 2010</i>, Reserve Champion Interbreed Female (7 exhibits) <i>Wagga Show 2008</i>, Reserve Junior Champion Female <i>Sydney Royal 2008</i>• A combination of proven genetics from two top performing studs in carcass competition.• The first heifer available from the Jandrew stud (<i>pictured right at four and a half months</i>)• Frame Score 3 (101cm (41") hip height at 8 ½ months)				

For a little and rare ancient breed, we reckon we're doing ok!

While Belties are sometimes dismissed by the uninformed as only front paddock 'lifestyle cattle' – and, let's face it, they do function well for that purpose – there's a commercial reality that lies under that belt, pretty as it is.

It's quality beef. A fact recognized by numerous carcass judges. They also recognize the powerful beef performance strike rate of a small rare breed (two-thousand odd) up against mainstream breeds who draw from tens of thousands of animals.

Carcass competition success has proven beneficial in creating mainstream awareness on the Belted Galloway's carcass competitiveness, and its piquing commercial interest. Breeders are finding their well-finished steers are achieving very respectable MSA grading results at the abattoir, and are being rewarded with a fair price per kilo.

Entrepreneurial breeders who have been using Belties in crossbreeding programmes express satisfaction with a range of Belted Galloway qualities.



***we're
keeping
an
eye on
the
BEEF!***



Belties demonstrate success and versatility when crossbred with Angus, Charolais, Galloway, Gelbvieh, Hereford, Limousin, and Red Poll as well as Bos Indicus, composite and dairy cattle. Beltie-cross steers have also performed remarkably well in carcass competitions.

So when you consider your next bull, check out the qualities of the Belted Galloway a little further. You may just be a tad surprised at what you discover about their beef-making capabilities.

NSW Carcass Achievements

Top ten earner
Sydney Royal 2010
Grand Champion Carcass (Heifer)
Cootamundra 2009
Champion Heavyweight Carcass (Steer)
Cootamundra 2009
Champion on the Hoof
Goulburn 2008
Champion Lightweight Carcass
Cootamundra 2007
Champion Lightweight Carcass
Sydney 2007
2nd Stan Hill Trophy
Sydney 2007
Highest Breed Average in Carcass Points
Sydney 2003

In terms of MSA meat-eating quality in carcass competition, Belties tend to perform quite well in beef quality – its not uncommon for them to place in the top 10% of carcass exhibits.

And hidden behind the very short list of achievements above are a wider group of Belties that gave carcass champions of other breeds a serious run for their money.

***Belted Galloways...
...a little breed that gives big results***

why not join us?

If you are interested in Belted Galloways for any reason, why not join the Australia Belted Galloway Association & learn more?

You don't have to be a registered stud to be involved. You don't even need to have cattle!

You'll receive the most up-to-date information on the breed and a **FREE** copy of our glossy **Belted Galloway Breeders Guide** – jam-packed with loads of useful information to get started! It's heaps of FUN!

Membership Fees

Annual Full Membership (Pro Rata):

1st July – 30th Sept 100% \$125.00

1st Oct – 31st Dec 75% \$93.75

1st Jan – 31st Mar 50% \$62.50

1st Apr – 30th Jun 25% \$31.25

Once only Entrance Fee for Full Membership \$50.00

Annual Commercial Membership \$40.00

Annual Associate Membership \$40.00

Annual Junior Membership \$15.00

Check out the **ABGA** or **LBC** websites for membership application forms, or simply phone your state councilor for more info!

The ABGA employs

Livestock Business Centre

to administrate its herd book.

Established in 1975, the Australian Belted Galloway Herd Book is the largest herd book of Belted Galloways in Australia.

Online Pedigree Searches

All members can access online pedigree searches at www.lbc.com.au. In order to do this, you also will need to be *online* members at LBC. Online access to the herd book is not publicly available.

Livestock Business Centre

PO Box 189, Kiama NSW 2533

Ph 02 4232 3333

www.lbccentre.com.au

Still Got Questions?

The ABGA is managed with the voluntary efforts of a national council of dedicated breeders. NSW has three committed councilors ready to navigate your entry into the Belted Galloway breed!

Francie Maclean 02 6764 4264
franciemaclean@ozemail.com.au

Denis Griffis 02 6550 6348
griffoauto@westnet.com.au

Merv Presland 02 9614 7592
jmpresland@optusnet.com.au

A Medium-sized Breed – not too big to physically deal with, or compact land like bigger breeds, and small enough to deal better with hill country. But big enough to produce a viable market-weight carcass.

Makes very healthy quality beef – There's no argument to this fact. Carcass statistics consistently demonstrate that Belted Galloways reign with, and can outperform, the top British and European mainstream breeds in beef quality and carcass performance. The Beltie carcass performance is acknowledged by observers outside the breed as remarkable given the tiny size of the national herd and their rarity.

Non-selective Feed-efficient grazers – The Galloway family of breeds are documented as the least picky of all cattle breeds in plant selection. Galloways are used in land conservation and reclamation projects in Australia and overseas, dealing better with marginal country. Other testing has shown that Galloways require the least amount of feed per kilogram of weight gain.

Hairy coated - Belties have a double-layered coat on a thick hide, and are documented as having 4,000 hairs to the square inch! This winter insulation translates into up to 25% less feed required in one feed-efficiency trial in comparison with other breeds. They're hardy cattle. Whose arguing with cheaper winter feed bills?

Very fertile – Applies to both bulls and females. High calving percentages are the norm, and expected.

Calves easily – Calf pulling is not common – most well-run Australian herds have never experienced it. Calves are born very small but grow rapidly.

Excellent Mothers - Belties are the superior milkers in the family of Galloway breeds (they were also used as dual-purpose dairy animals in centuries past). This translates to a great capacity to feed and grow their calves well. Calf rejection is uncommon.

Very Docile – Belties are renowned for good temperament – even the bulls. While mothers are protective of their calves, they still remain very easy to deal with. Their soft docility makes them a particularly good animal for the small landholder to handle. (However, be safe. *Badly* treated cattle are always wary, and no matter how docile an animal is, the old adage 'never trust a bull' is wise – they are heavy animals!)

Live a long productive life – Cows can actually live 20-plus years and still feed a viable calf. So there is less need to retain heifers as replacements, creating extra profitability in selling more of them. Bulls have also lived to this age siring healthy calves. A number of 10 year-plus Beltie bulls have sired steers with documented above-average carcass results in competition.

Naturally Polled – no damaging horns for cattle in transport - or for you to dodge in the yards!

They're Pretty – Yep. We know, thanks. We are pleased to assure you this doesn't affect the beef☺