

AUSTRALIAN  
**Belted Galloway**  
A S S O C I A T I O N



2016 **ANNUAL**





Come and see 200 + head of  
Belted Galloway and Galloway Cattle  
in beautiful, scenic South Gippsland  
*Visitors are most welcome!*



## Karandrea

Rob & Jan Davidson  
RSD Binginwarri, Victoria 3966  
Phone (03) 5185 1341  
[karandrea@skymesh.com.au](mailto:karandrea@skymesh.com.au)

## Windy Hollow

Rebecca & Darren Avery  
255 Rendells Rd, Welshpool 3966  
Phone (03) 5688 1038  
[dravery@netspace.net.au](mailto:dravery@netspace.net.au)



# Contents

COMMITTEE .....	2
GLEN JUNOR .....	4
MEET OUR NEWEST JUNIOR MEMBER .....	6
HEATHER FIELD .....	8
COME BY CHANCE: GRANITE BELTIES .....	10
BELTED GALLOWAYS: DON'T UNDER ESTIMATE THEM .....	12
WARIALDA BELTED GALLOWAYS .....	16
THE GREATLEY STUD .....	19
35 YEARS OF BELTIES & GALLOWAYS .....	20
BACK INTO BELTIES .....	22
SHOW CHAMPIONS .....	24
MEMBER LIST .....	28
SEMEN LIST .....	33

# Advertisers Index

KARANDREA/WINDY HOLLOW .....	IFC
FREEDOM RISE .....	2
ASHLEIGH PARK .....	3
GLENBLAIRIE .....	5
GRANDVIEW .....	5
PINE GULLY PARK .....	6
KOOKABURRA .....	7
WOMBLEDALE .....	7
HEATHER FIELD .....	9
GRANITE BELTIES .....	10
LOWN BRAE .....	11
NEW ENGLAND .....	13
CLANFINGON .....	13
BEKADEN .....	14
MANOORA PARK .....	15
GOLDEN VALE .....	15
WARIALDA .....	18
BENDEN LODGE .....	21
CLIFDEN .....	21
RED OCHRE .....	21
FAIRLIGHT .....	22
APRIASH .....	23
IRONBARK .....	23



Graphic design and printing by Hansen Design & Print  
P 08 8762 3699 · [www.hansenprint.com.au](http://www.hansenprint.com.au)

Copyright and Trade Marks  
This publication is protected by copyright.  
All other rights are reserved as permitted under the Copyright Act 1968

Disclaimer: Opinions in this publication may or may not be the opinions of the Australian Belted Galloway Association Inc. or of its members, Information published is of a general nature only and offered in good faith. Readers are advised to rely on their own enquiries and seek further advice from appropriate sources. Individual copyright of contributed articles remains with each author.

# Committee

## President

### Ian Marjason

"Longfield"

PO Box 101, Bungendore NSW 2621

02 6238 1576

imarjason@bdn.com.au

## Vice-President

### Merv Presland

1395 Mowendoc Road, Mt George NSW 2424

02 550 6494

jmpresland@bigpond.com

## Committee

### Hume Macdonald

PO Box 344, Echunga SA 5153

08 8388 8503 (ph)

belmpark@bigpond.net.au

### Ashleigh Michael

8355 Bass Highway, Leongatha Vic 3953

03 5664 3162

ashleigh\_michael@yahoo.com.au

### Kerry Heazlewood

RMB 2050 Purvis Road, Yallourn North Vic 3825

0431 144 347

pinegullypark@bigpond.com

### Anne Wilson

158 Mount Blackwood Road, Myrniong Vic 3341

0418 139 621

anne.w5@bigpond.com

### Pamela Brown

42 Handleys Lane, Mittagong NSW 2575

0434 100 280

pamjbrown@exemail.com.au

### Colin Walker

113 Love Road, Vale View Qld 4352

07 4696 2844

lownbraefarm@bigpond.com

### Eleonora Greatley

PO Box 2188, Warwick WA 6024

0418 906 422

eleonoradbgreatley@gmail.com

## Secretary

### Carole Johns

ABRI, UNE, Armidale NSW 2351

02 6773 3243 or 02 6773 3555

Email: beltedgalloway@abri.une.edu.au

FOR SOMETHING A LITTLE DIFFERENT



*Baden Geeves & Raymond Cross  
invite you to visit them at  
Yarraman, S.E. Queensland,  
to view their wonderful animals.*

*Breeding Family Friendly  
Miniature Galloways suitable  
for Small Acreage.  
Ph 07 4163 8652*

*E:freedomrise@bigpond.com*



RED & BLACK MINIATURE BELTED GALLOWAYS



# Ashleigh Park

## B E L T E D G A L L O W A Y S

ESTABLISHED IN 1987

ASHLEIGH MICHAEL - 8355 BASS HWY, LEONGATHA VIC 3953  
(03) 5664 3162 0428 307 250 ashleigh\_michael@yahoo.com.au



**ASHLEIGH CLARICE** (AI) (POIS) (MF) Reserve Champion Female 2000, Reserve Senior Champion Female 2002 Senior & Grand Champion Female & Supreme Exhibit 2003 RMS



**ASHLEIGH YVETTE** (AI) (POIS) (MF) Senior & Grand Champion Female & Supreme Exhibit 2005 Red Hill Regional Feature Show



**ASHLEIGH VIOLET** (AI) (POIS) (MF) Junior Champion Female 2001 Royal Melbourne Show (RMS), Senior & Grand Champion Female & Supreme Belted Galloway 2006 RMS



**ASHLEIGH CHANTAL** (POIS) (MF) Senior, Grand Champion Female Supreme Exhibit, Galloway Family Interbreed Champion at 2009 RM Galloway Family Feature Show



**ROWSLEY PARK RED BOURBON** (POIS) (MF) Reserve Senior Champion Female 2008 RMS, Reserve Senior Champion Female 2009 RM Galloway Family Feature Show, Senior & Grand Champion Female, Supreme Exhibit 2010 RMS



**ASHLEIGH HOLLY** (POIS) (MF) Reserve Junior Champion Female 2013 RMS



**ASHLEIGH DANIELLA** (POIS) (MF) Junior Champion Female 2009 RM Galloway Family Feature Show, Senior & Grand Champion Female & Supreme Exhibit 2013 RMS



**ASHLEIGH GWYNEDD** (POIS) (MF) Reserve Senior Champion Female 2013 RMS, Senior & Grand Champion Female 2014 RMS



**ASHLEIGH SIGNATURE** (AI) (POIS) (MF) Champion Bull 2000 Reserve Champion Group C Interbreed Bull 2000 Reserve Senior Champion Bull 2001 RMS



**ASHLEIGH YARDSTICK** (POIS) (MF) Junior & Grand Champion Bull & Supreme Exhibit 2004 RMS



**ASHLEIGH CHALMERS** (POIS) (MF) Reserve Junior Champion Bull 2008 RMS, Senior Champion Bull 2009 RM Galloway Family Feature Show



**ASHLEIGH HELMSMAN** (POIS) (MF) Junior & Grand Champion Bull 2013 RMS



**ASHLEIGH HARRISON** (POIS) (MF) Senior & Grand Champion Bull & Supreme Exhibit 2014 RMS

## OTHER CHAMPIONS

**ASHLEIGH ALTITUDE** (AI) (POIS) (MF) Reserve Junior Champion Bull 2006 Pakenham Feature Show  
**ASHLEIGH ANGELIQUE** (AI) (POIS) (MF) Junior Champion Female 2006 Royal Melbourne Show (RMS)  
**ASHLEIGH CLAIRE** (POIS) (MF) Junior Champion Female 2008 RMS  
**ASHLEIGH DESIRED** (POIS) (MF) Reserve Junior Champion Female 2009 RM Galloway Family Feature Show  
**ASHLEIGH EMMERSON** (POIS) (MF) Junior & Grand Champion Bull 2010 RMS  
**ASHLEIGH FLETCHER** (POIS) (MF) Reserve Junior Champion Bull 2011 RMS  
**ASHLEIGH GRACEANNA** (POIS) (MF) Reserve Senior Champion Female 2003 RMS  
**ASHLEIGH GRASON** (POIS) (MF) Reserve Champion Bull 1996 RMS, Champion Bull 1997 Berwick Feature Show  
**ASHLEIGH GUARDSMAN** (POIS) (MF) Reserve Junior Champion Bull 2012 RMS

**ASHLEIGH VALENTINE** (AI) (POIS) (MF) Senior & Grand Champion Female & Supreme Exhibit 2006 Pakenham Feature Show Reserve Senior Champion Female 2005 RMS  
**ASHLEIGH WILDFIRE** (AI) (POIS) (MF) Senior & Grand Champion Bull 2003 RMS  
**ASHLEIGH WINDSOR** (POIS) (MF) Junior Champion Bull 2002 RMS  
**ASHLEIGH XANTHIA** (AI) (POIS) (MF) Reserve Junior Champion Female 2003 RMS  
**ASHLEIGH YARDLEY** (AI) (POIS) (MF) Reserve Junior Champion Female 2004 RMS  
**ASHLEIGH ZINNIA** (AI) (POIS) (MF) Reserve Junior Champion Female 2005 Red Hill Regional Feature Show  
**ASHLEIGH ZION** (AI) (POIS) (MF) Reserve Junior Champion Bull 2005 RMS  
**APRIASH FARANHEIT** (POIS) (MF) Junior & Grand Champion Bull, Supreme Exhibit 2011 RMS  
**MIDFERN STUART** (POIS) (MF) Champion Bull 1992 & 1993 RMS



# Glen Junor: The New Owners of Cumbria Belted Galloways

McCamley & Kehoe Families

Glen Junor is an historical pastoral farm in Gisborne, Victoria. The farm comprises of 525 acres of improved pasture, with 2 kilometres of Jackson's Creek incorporated along its boundary.

Most of the improvements to the land were made over the past few decades by legendary Melbourne Cup jockey Harry White, who retired to the farm after his racing career came to an end.

Many of Harry's favourite horses retired to the farm with him. "Think Big" (Melbourne Cup winner in 1974 and 1975) and "Hyperno" (winner of the Melbourne Cup in 1979) are buried on the farm.

The McCamley and Kehoe families purchased Glen Junor from Harry in 2015 and soon after a herd of Belted Galloways were grazing the paddocks once only reserved for champion race horses.

Glen Junor is now a partnership between our two families. The McCamleys manage the farming projects and the Kehoes are managing the environmental projects that the farm is also involved.

We have maintained a small herd of commercial Belted Galloways for a few years before the purchase of Glen Junor and were able to purchase a few more when a local farm dispersed all of their commercial cattle earlier in 2015.

The decision to run with Belted Galloways at Glen Junor was pretty simple. We just wanted hardy cattle that would give us the least amount of trouble as possible. In the limited time we had with Belted Galloways, we found they were easy to move around, calved without a single problem and would eat almost everything in the paddocks. The calves would grow quickly and the whole experience was surprisingly easy, even fun. Their behavior makes us laugh at times.

Once we had decided to run with Belted Galloways at Glen Junor, we thought it would be a good idea to have a mix of commercial and stud cattle. We set a target to purchase a herd of 100 registered stud Belted Galloways. Clearly a rookie move, it only took a few phone calls and some basic inquiries and we soon realized it wasn't that easy to buy registered stud Belted Galloways in any sizeable lots.

Just as we were about to give up on the idea of stud cattle, we were lucky enough to receive some help and advice from Kerry Heazlewood from Pine Gully Park. She introduced us to Stan Robinson at Cumbria Belted Galloways.

That introduction led to a series of visits and conversations which resulted in us purchasing all the stud cattle from



Cumbria Belted Galloways. Stan established Cumbria in 1975 and we felt incredibly lucky to be able to obtain a sizeable herd of stud cattle, but also to commence our stud enterprise with some of the best Belted Galloways in the country.

In the limited time we have known Stan, we can't help but be humbled and inspired by the efforts he put into both the development of the breed in Australia and his herd of cattle.



We know that we are the beneficiaries of many decades of his work. I'm not sure we will even try to fill his boots, but we will certainly continue to breed really high quality stud and commercial cattle, using his herd as our foundation. We are hopeful we can drag him out of retirement from time to time to help us out at Glen Junor. We think he may have a new life as an expert consultant to people like us.

So the horses have made way for Belted Galloways and a new era has begun at Glen Junor. We currently have around 70 commercial cattle and 70 registered stud cattle, almost all coming from Cumbria Belted Galloways.

We are optimistic about the future. We have a wonderful piece of land, plenty of water, a brilliant herd of cattle and many of the stud cattle will start dropping calves in the coming months. As luck has it, the front paddocks of Glen Junor front two major roads that connect nearby towns in the Macedon Ranges. We have Stan's cows in the front paddocks (of course) and they are doing a great job advertising the Belted Galloway breed. They can really pull a crowd, there is always someone pulled over looking at them. I don't know of any other breed of cattle that can



make people smile so easily or at the very least pull their car over to have a proper look at them. A rare sight in today's busy world.

We will always have both commercial and stud cattle available for sale. We are very thankful to the many people who have helped us from the Belted Galloway Association over the past 12 months. A wonderful group of people and we hope to be able to help out where we can in the future.

– Trent McCamley



## Grandview Belted Galloways

Grandview Joshua

2014 & 2015 Royal Adelaide Show

**Grand Champion Bull**

2015 Royal Geelong Show

**Grand Champion Bull**

Anne & Adele Wilson

Myrniong, Vic 3341

Mobile: 0418 139621

Email: [anne.w5@bigpond.com](mailto:anne.w5@bigpond.com)



## Glenblairie BELTED GALLOWAY

### Minatures

Foundation herd of Miniature Belted Galloways.

Established by breeding down in size over a 15 year period, by line breeding for size.

These are Fullblood Minatures.

Glenblairie Olympus measured 117cm at 3 years.

### Standard

\* Bulls \* Heifers \* Cows \* Calves

**Arie & Erica Eyles**

Phone/Fax: 03 5345 6468

[arie@activ8.net.au](mailto:arie@activ8.net.au)

[glenblairiebeltedgalloways.com](http://glenblairiebeltedgalloways.com)



# Meet our newest Junior Member:

## Tim Aspinall

Tim has always been interested in cattle, and growing up in the New England area at Walcha, country NSW gave him plenty of opportunity to visit his Poppy's farm as often as possible. He could always be found in the cattle yards collecting any old ear tags he could find.

Tim is 10 years old now, and one of his favourite things to do is to visit the Biffin family dairy in Camden, NSW. He normally wakes



### PINE GULLY PARK

*Black and Dun Belties*  
*Belted Galloway Stud*



**PETER, KERRY & RICHARD HEAZLEWOOD**  
**RMB 2050 PURVIS RD, YALLOURN NORTH VIC**

**[03] 5167 1048**



**Quality Stud or  
Commercial cattle  
usually available.**

**Breeding beautiful  
Belted Galloways  
for ... years**



**Visitors  
always welcome!**

**[www.pinegullypark.com.au](http://www.pinegullypark.com.au)**



up at the crack of dawn before everyone else, heading up to the dairy to make sure he doesn't miss out on a minute of milking.

The Biffin family also have a line of outstanding Ayrshire Stud Cattle. The family competes each year at the Sydney Royal; one of Tim's dreams would be to also show at this level.

It's impossible to do any cattle work without him coming to help out on the family's 50 acre lucerne farm and horse stud 'Hilltop' in the picturesque Dungowan Valley at Tamworth, NSW. Tim spends a lot of his time down at our yards with his Ayrshire heifer and Limousin cross steer, teaching them to lead and stand up to be judged.

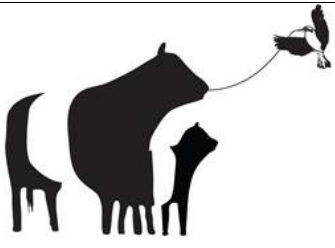
He had been pestering his mum Pauline West and her partner Heath Biffin to buy him a cow that he could show. Pauline said, "luckily for us we contacted Francie Maclean at New England Belted Galloways who is located about 20km from us.

We were able to purchase 3 beautiful Belted Galloway heifers to start our own stud with the Australian Belted Galloway Stud under the name of Hightop".

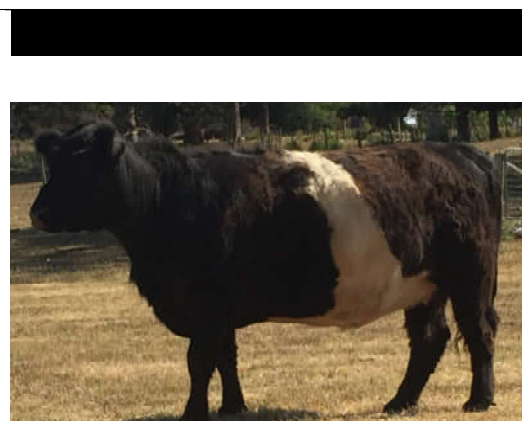
Tim has been going out to Francie's to help train the heifers, tying up, grooming and leading in preparation for their first rural show. Tim and the family are planning their first showing venture with the 3 heifers this February 2016.



web: [www.kookaburrabelties.com.au](http://www.kookaburrabelties.com.au)



**KOOKABURRA  
BELTED GALLOWAYS**  
Glen & Karen Prien  
502 Ecclestone Road,  
Riverside, TAS, 7250  
Home: (03) 63271050  
Mob: 0488317271



email: [info@kookaburrabelties.com.au](mailto:info@kookaburrabelties.com.au)

# WOMBLEDALE BELTIES

## DOCILE AND PROVEN WINNERS



## SOME OF THE BEST FULL BLOOD IN THE COUNTRY

CONTACT - Susan & Peter Burgess WOMBLEDALE, 1263 Sofala Road, Peel, Nr. Bathurst NSW 2795  
P.O. Box 342, Bathurst NSW 2795  
EMAIL - [wombledale@bigpond.com](mailto:wombledale@bigpond.com) PHONE - 02 6337 6535 or 0402 099 688



# Heather Field Belted Galloway Stud

Phillip & Jodie Horton

In 1995 after running sheep for some time we decided some cattle would make a nice change and started to look at the countless cattle breeds we could undertake. A bit shy of the saleyards and what you could be bringing home, we were sure we wanted quality stud stock, but what to buy and then where to look.

We are not in “cattle country”. Anyone who knows Tassie knows the South East can be a farmer’s nightmare. You always have to prepare for the worst as the rain may just not

come and there is nothing worse than the stress of worrying about how to feed stock, especially when you have invested in quality stock.

We had seen the Belted Galloways in the north of the state and researching the Galloway breed in general thought they may just be for us. Of course it is hard to go past the significant markings of the Belties and if anything, would not only appeal to the meat market but also to others who like us want to look at something quite unique. Like any animal it costs as much to feed a bad one as it does a good one!

We got in touch with some local breeders and then had tough choices to make, after visiting Rodney and Dianne Smith from the Myrtlevale Stud in East Devonport we purchased three fantastic heifers. In those early years we used AI to start, with bulls including Midfern Norman, Midfern Stuart and Mochrum Kingfisher, until we could breed our own bull. Then when we did, as we all know, we soon needed to source out again.

Sourcing new bloodlines is enjoyable and the people we have met even more so. It has meant travelling to Royal Shows and different studs on the mainland each time, and each time a new experience. Along with Myrtlevale stock we also have purchased stock from Ashleigh Michael and Stan Robinson both breeders of quality stock that have taken our stud further than I ever think we hoped.

We began showing and really enjoyed the sense of





achievement from breaking in cattle to being out there in the ring and having a quiet confident animal that trusts in you. Over the years we have won many Grand Champions and had fun doing it. One such year we were showing at Hobart Royal Show and took a Cumbria cow called Duchess out, led by our eldest son Tim who was only 8 at the time. There we had won Grand Champion Bull and Female, and were on the main arena in the Grand Parade as all the Grand Champions were required to line up in recognition of their win. Next came out motor bikes, oh yah, poor Duchess spooked for perhaps half a second and Tim let go, but to both their credit they just stood there and got themselves sorted and they were ready to lead off in no time. An amazing cow she taught Tim so much and gave him so much confidence.

June 2015 saw us selling steers to the saleyards at Powranna where cattle are yarded from all over the state. We topped the sale with our heaviest steer weighing 650 kilos and others weighing 600 kilos and our lightest steer weighing 530 kilos. Our heifers that day weighed 625 kilos, just proving like any other breed they can certainly hold their own. We would obviously work hard to continue and achieve these sorts of results in the saleyard.


Wow! 2016 will be our twentieth year with Belties, a bit of a milestone for us not knowing we would have so many fond memories and great friends. We hope you all have a prosperous and great year ahead.



# HEATHER FIELD

## BELTED GALLOWAY STUD

### Tasmania



Phillip & Jodie Horton
ph- 03 6265 8500
894 Arthur Highway Forcett Tas 7173



# 'Come by Chance' – Granite Belties

Susan & Neill Gauld



Our story in Belted Galloways begins with one heifer, named Bea. She was called Bea because she was 'B'grade. In fact, as time went on and we learnt more about the breed, we realised she wasn't even that. She was obviously part breed – probably an Angus cross - but she had a lovely wide and full belt. We will always think fondly of Bea, even though we have sold her on, because she started us, by chance, in Belted Galloways.

We have owned our small property outside of Stanthorpe (QLD) for about 11 years, starting with 100 acres, and doubling to 200 acres recently as our number of animals has increased. Our property is just over the border in NSW, so we have had to learn and deal with animal health and movement regulations of two states. We have a lovely little home and property, and we started with carrying agistment cattle, and then our son had a go at fattening steers. About 5 years ago, it was time for us to make a start in our own cattle enterprise.

We were interested in Belted Galloways after seeing a display at a field day, and had kept brochures and information. However it was not until we attended a sale in Warwick and saw Bea, that we were reminded that this may be a good way to go. So after buying this one

heifer, we were offered 4 more commercial heifers from a small breeder in Wallangarra. That was the start of our small herd.

Further research led to the purchase of some registered and commercial breeding stock - a mixture of heifers and cows. We contemplated learning AI, but quickly dismissed this as too much of a steep learning curve for us. Next we contemplated and investigated hiring a bull. But in the end we decided to purchase, and we were fortunate to locate a suitable bull, Pyree Park Fortunate Son (Frank), for sale in Jindabyne. Frank was getting too amorous with the neighbours cows, and jumping the fence. He needed a bigger herd of girls to keep him busy. Luckily, Susan's cousin runs a stock carrying transport business in NSW, and could bring Frank up on trucks already coming north. Frank travelled over 2 weeks, having a few stops on the way. When he finally arrived at our place, he looked very tired from his road trip, and wasn't too interested in his new girls for a few weeks.

But settle in he did, almost doubling our herd size in his first breeding season. Frank has consistently produced full belted 'A' grade stock, when mated with 'A' grade females. In addition to Frank, we have a second bull, Granite Belt Gordon, the offspring of one of the registered cows we purchased in calf. We can run two herds in each breeding season, and then run all the females and steers together through autumn and winter, rotating through our three large paddocks.

Our herd consists of stock from the following bloodlines – Pyree Park, New England, Chevron Park and Hawkshead. Our aim is to market and sell to small lot holders,




promoting the quietness and ease of handling of the breed. Following the drought in our area in 2014, we had to make the hard decision to sell 1/3 of our herd – culling mostly commercial females. This decision did improve our overall herd compilation, and we are currently concentrating on increasing the number of registered 'A' grade breeding females. This season, we have found homes locally for all our weaner steers, with reasonable financial return.

Since buying Bea, we have enjoyed the challenges of learning about cattle, and specifically about Belted Galloways. We have a good friend who has helped us to learn the husbandry skills of vaccinations, drenching, ear-tagging, and castration. Our son, who has spent 2 years as a jackaroo/ringer in northern Queensland, finds much amusement in the time it takes us to actually do some of these tasks. But we don't have the pressure of large numbers. One of our greatest challenges has been mastering cattle movement through our ancient timber cattle yards. The set-up did not promote cattle flow, and there are a number of bottle necks. We have made some improvements, but it is still not ideal. We have found there is always something to learn, and something to improve.

Overall, our Belted Galloway herd have added to our lives. They are a lovely quiet smaller breed, with easy calving, and are relatively easy to handle. We particularly enjoy the calving season, and watching the new calves grow. We enjoy naming new calves each season – deciding which relative from our extended family will have the next calf named after them (depending on the letter for the year). The best part is watching our herd grazing quietly from the verandah of our little cottage. Our cattle have given us and our family a great deal of pleasure.


– Susan and Neill Gauld





# Lown Brae


Beltie Hides • Cattle often for sale



Colin, Raeline & Sam Walker  
Ph: (07) 4696 2844  
Email: [lownbraefarm@bigpond.com](mailto:lownbraefarm@bigpond.com)  
[www.beltedgalloways.com.au](http://www.beltedgalloways.com.au)

**3rd**  
out of 27

2014 Ag-show Interschool  
Led Steer/Heifer carcass  
competition





# Belted Galloways

## – Don't under estimate them

Francie MacLean

Francie and Duncan MacLean initially started their Belted Galloway operation in 1998 with 10 commercial females. In 2000, joined by Francie's late father Stig Magnusson, they purchased a substantial line of registered females from one of the largest original Australian studs, 'Midfern' in Victoria. The New England Belted Galloway Stud was created.

The stud has previously enjoyed success in royal show rings, but Francie has stepped away from showing, and her time on the ABGA council from 2007 – 2013, and her herd has over the past two years seen a large reduction.

New England Belted Galloway Stud now has a core stud breeding herd of 30 Stud registered females. The stud is 1200 acres of undulating basalt country in the Mulla Creek Valley, northeast of Tamworth, NSW. Whilst she has reduced her stud herd of Belted Galloways she has become more focused on commercial breeding. The Macleans also run a self replacing herd of Black baldy and Angus females.

Here is where Francie's breed story continues.

Rereading a story I did with 'The Land' newspaper in early 2008, on producing Belted Galloway steers for the commercial market it amuses me how naive I was.

I followed the likes of my dear friend the late Eve Cullen in trying to market a breed like Belted Galloways to saleyards. Whilst I had more success than others because I presented well finished Belted Galloway steers, time and time again,



there was always a 20c per kilo price reduction, that couldn't be absorbed nor justified in the longer-term. That price reduction per beast could be \$90.00 or worse, by 15 steers on the day the loss could amount to \$1350.00 for the pen sold at the sale yards.

Referring to the Land article, I did quote that *"...the local saleyard is no place for the smaller, rare alternative breeds, even with correct finish, and the meat buyers are generally conservative"*. Well nothing has changed and we haven't sent another Belted Galloway to the saleyards for 7 years.

I anticipated our newly developed direction would not or ever be direct marketing to the household consumer, what if, through no fault of mine their beef was tough, I'd feel embarrassed and want to replace the meat and that would







be self-defeating, no, direct marketing was not for me. Many local butchers now days don't buy full sides, they purchase generic boxed beef, thereby avoiding wastage. It has left most local butcher shops with no point of difference; hence, we see a firmer grip by multinational companies. I did believe I'd

secured a butcher at one stage outside of NSW, but I quickly realised he'd come to me because he'd financially exhausted all the direct marketers in his home state. A number of restaurants went the same way; there'd be no easy solutions.

The most important event in our commercial marketing happened through our local Dept Primary Industries Beef Officer, Al Rayner, he suggested we sell directly to Primo Hunter Valley Meats in Scone, 2 hours away. Alistair gave me an introduction to the meat buyer, but more importantly he gave me the confidence to market Belted Galloway steers directly, and understand their requirements.

Our first draft of steers to Primo sold well but unfortunately only 3 of the 15 graded Meat Standards Australia, this was due to many factors, predominantly high PH levels, perhaps due to a drop in nutritional values in the pasture and lack of quality. Regardless lessons have been learnt and changes made. Cattle are fattened on lucerne, improved pastures, native grasses or forage oats throughout the colder months. Steers

are fattened together usually in large groups, then drafted into finished groups, steers are never with heifers, as the female cycling pattern erodes condition, with steers mounting heifers.

Since 2008 we have continued to sell all our Belted Galloway steers directly, and they have all graded to Meat Standards Australia requirements.

Most recently Primo Hunter Valley Meats were purchased by JBS Australia. JBS generally has a preference for Angus or Angus infused cattle. I had grave fears about what that meant for us as clients, or producers. I perhaps

**NE**  
NEW ENGLAND

**BELTED GALLOWAY STUD**

**Commercially focused breeding objectives**

Francie MacLean Mullia Creek Tamworth NSW 0407 660 334

**CLANFINGON**  
BELTED GALLOWAY

**BREEDING QUALITY BLACK BELTED GALLOWAY**

Enquiries welcome: Judith McKinnon - 0410 840 827



was unnecessarily concerned, that said, we had 46 Belted Galloway steers in two stages of finish and we had no other market developed.

JBS Australia's meat buyer drove up to view the steers, imagine that, a meat buyer driving up to purchase Belted Galloway steers. They were drafted up into two similar groups, 25 head followed by 21 head 8 weeks later. We locked in the grid price of \$6.10 per kilo carcass weight. All the first draft graded MSA. Our average price for each carcass was \$1558.76 excluding GST. These steers were 0 – 2 teeth dentition.

Then the next draft of steers and heifers totalling 21 left

this week, December 2015, contracted at \$5.60 per kilo for steers and \$5.50 per kilo for heifers, the dry conditions reflected a price reduction, or a price correction, I believe they say. The average price realised was \$1401.46 per head excluding GST, for predominantly K drop, 2014 cattle.

They were all marketed into the recently developed market at JBS Australia 'Great Southern Beef' range.

JBS states that *"...Great Southern Beef is primarily sourced from British breeds such as Angus and Hereford. Superior genetic selection contributes to this rare breed of quality meat."* New England Belted Galloway Stud is excited to produce beef meeting the exacting standards set by JBS Australia's Great Southern range.

On the strength of this changing opportunity we have decided to join our Belted Galloway commercial cows to our stud Angus bulls. We had enjoyed an excellent but also limited market selling commercial heifers to breeders, although, we can achieve a greater price selling the Belted Galloway heifers direct for beef. Therefore, it was decided if we removed the need for a form of purity in the breed why not introduce a commercial cross-breeding program. I also deregistered some of our stud Belted Galloway cows and have put them into the cross-bred commercial program. This year was our first full joining with somewhere



## BEKADAN BELTED GALLOWAYS



Producing Show and Carcase Champions since 2004

Merv and Beth Presland

mob: 0427 942 152

email: [jmpresland@bigpond.com](mailto:jmpresland@bigpond.com)



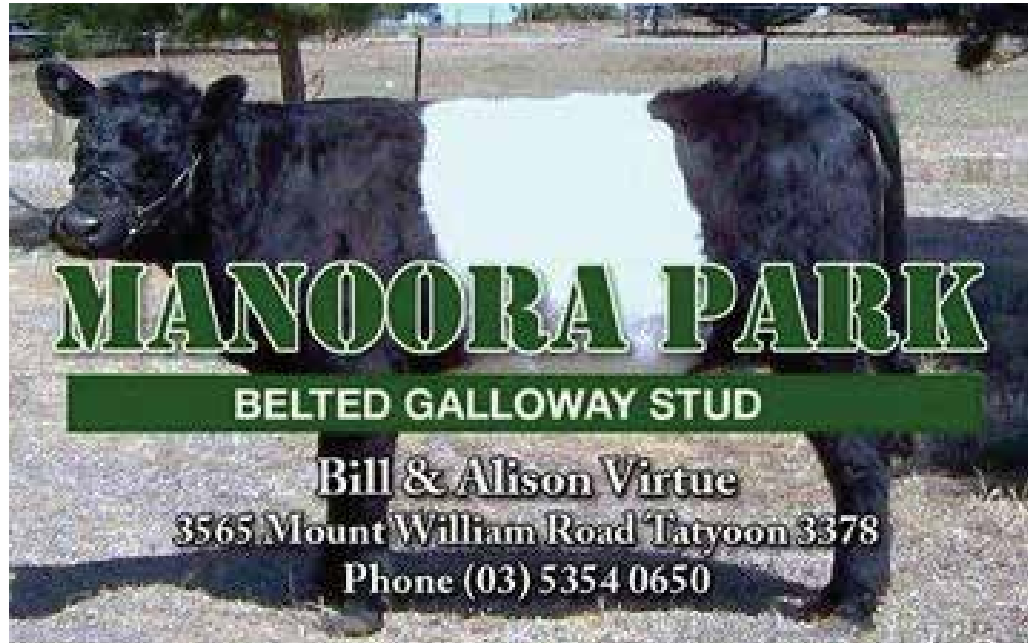
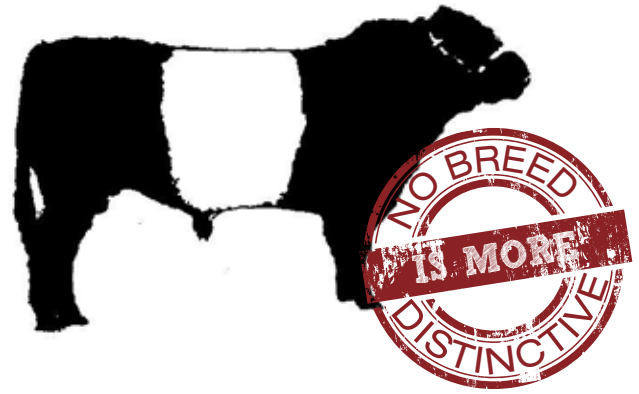
in the order of 25 Angus Belted Galloway cross calves, they have displayed increased muscularity and they also have an increased growth pattern due to hybrid vigour. Strangely, most retained a good belt for those that are interested.

New England Belted Galloway Stud has as part of our requirement and our commitment to supplying our beef into the Great Southern Beef range has become a part of the JBS Farm Assurance program.

The 'JBS Farm Assurance Program', states that, It fulfils today's customer expectations that meat be grown safely, responsibly and ethically. It conforms to a very high standard for animal welfare 'on farm' and also during transportation and handling.

JBS Australia states they are committed to pioneering the best possible way to deliver the delicious prime restaurant quality meat we all deserve. It is an enduring commitment and growing appreciation you'll find across the entire supply chain.

For more information visit:  
[www.jbssa.com.au](http://www.jbssa.com.au)



## Golden Vale Belted Galloway Stud

Grose Wold NSW

Producing quality Red and Black Belted Galloway Cattle



Contact Debbie Kavanagh  
[debkav@tpg.com.au](mailto:debkav@tpg.com.au)  
[www.goldenvalebelties.com.au](http://www.goldenvalebelties.com.au)  
M: 0412 040 412



# Warialda Belted Galloways:

## Focused on the End Game

Sophie O'Neil



In 2005 Allen and Lizette Snaith started selling their Warialda Belted Galloway beef at a farmers' market in Lancefield, just over 40kms from their Clonbinane farm north of Melbourne. At the time the Snaiths had bred Belted Galloways for over 25 years, but were inspired to start selling their beef after attending an Australian farmers' market conference in Albury.

"The idea of selling our meat had been boiling away with us for a while, but at the conference we were able to make contacts and gain the confidence to take the plunge," explains Lizette.

Neither Allen nor Lizette could have ever imagined back then what their business would become. Ten years on they attend eight farmers' markets each month, supply some of Melbourne's most acclaimed chefs and their beef and small goods have won several medals at the Royal Melbourne Fine Food Awards and delicious Produce Awards. (note: delicious Produce Awards are an annual competition celebrating Australia's most outstanding and

innovative produce with judges like Maggie Beer and chefs Christine Manfield, Matt Moran, and Shannon Bennett.)

All accolades aside, Allen and Lizette believe their most significant achievement in the past decade is making a genuine living from their Belted Galloways without any supplementation from off-farm incomes.

If you were to purchase a steak from the Warialda Belted Galloway stand at a farmers' market, you'd immediately





notice it is remarkably different to the beef sold at most butcher shops. Allen has established systems that allow his cattle to be grass fed all year round. Warialda's beef is a distinctive deep red colour with excellent intramuscular fat, mostly because the animals are not slaughtered until they are at least 30 months old. The animals are then dry aged to further develop flavour and tenderize the meat.

"The trend in Australia is to sell yearling beef because it's quick and cheap to produce," explains Allen. "But research has shown us that Belted Galloways don't get subcutaneous fat until they are older and it is this fat that produces flavour."

The Snaiths sell approximately two to three heavy carcasses each week and because these carcasses need to age before being sold, it's not uncommon for them to have up to eight bodies hanging in their butcher's cool room at any given time. Allen explains that as a small producer continual supply is probably his greatest challenge, as his customers all expect a consistent product with just the right amount of fat.



customers we simply wouldn't be where we are now," admits Lizette.

It's no mean feat attending eight farmers' markets each month and doing all their own restaurant deliveries, but Allen says that because they supply all their customers directly, without any middlemen, farming and meat processing decisions are more straightforward as they are always receiving feedback.



"It's essential that I maintain a good depth of selection potential in the paddock and consequently I'm generally working about three years in advance," he says.

Understanding the end market is something that Allen and Lizette have invested a great deal of time and effort into. In 2006 Slow Food Melbourne supported the couple to travel to Italy for the International Salon del Gusto and Terra Madre, a huge event that brings thousands of farmers and food producers together from 150 countries.

They've also visited the UK and France to meet up with fellow Belted Galloway breeders and artisan butchers, worked for six years at Northern Melbourne Institute of TAFE learning butchery whilst processing their own meat, not to mention taking the time to listen to their customers - who are mostly educated and passionate foodies.

"Without the response and support from farmers' market

"My proof of whether I have done a good job is not an Meat Livestock Association (MLA) rating," says Allen. "It's simply whether a chef or farmers' market customer actually wants to buy the product."

And by all accounts the Snaiths are doing things extremely well. In November, award winning food writer Richard Cornish wrote a piece for The Age and Sydney Morning Herald about Australia's top 30 producers for 2015. Warialda Belted Galloways were rated number one.

Chef Matt Wilkinson from Melbourne's Pope Joan and Jack Horner restaurants echoes similar praise, "Upon my meeting of the Snaiths, my life has become richer knowing there are beautiful people out there that care for preserving traditions in food, animal welfare and farming the best ethical, tasty product they can. I am all the better-off being able to call Allen and Lizette my friends and couldn't think of any better farmers of cattle or meat in Australia."

To achieve such success, Allen's skills have had to grow from farmer to butcher and Lizette has been forced to master marketing their product. Social media is the cornerstone of Warialda's marketing strategy and on a daily basis Lizette manages the business' twitter, Instagram and Facebook accounts.

"Social media is a huge undertaking for me, but for it to be successful I have to take time to engage with the



people following our business,” she explains. “I might take pictures of the cattle in the paddock, of the butchers cutting up meat or even the end product in one of our restaurants. It’s actually about sharing our whole story with our community and inviting other people to be apart of it.”

It was from Lizette’s conversations with farmers’ market customers via social media channels, that she and Allen

developed the idea for an asado to be held on their property. An asado is an Argentinian barbecue and the Snaiths held first one on their farm with over 150 people attending in late 2014. Allen and Matt Wilkinson roasted a whole forequarter over a fire for about 24 hours and the magnificent barbecued meat was served with delicious salads.

Lizette says they held the event to give their customers an opportunity to visit the farm, see their animals and enjoy the beef – kind of like a farm open day, but with extra appeal for their food loving customers. She also admits she and Allen relished working on the project, a break from their weekly farming, butchering, delivery routines, and consequently held a second Warialda Asado in April 2015 with even greater success. Their aim is to now stage these events annually and anyone interested in attending can find out details on the Warialda Belted Galloway website [www.wbg.com.au](http://www.wbg.com.au).

The Warialda Belted Galloway story doesn’t end here. Allen and Lizette are now in the throes of building a commercial kitchen and farm shop on their property and hope that one day this will grow into a space for butchering and small goods manufacturing.

– Sophie O’Neil is a Melbourne based freelance food writer





**WARIALDA**  
**BELTED**  
**GALLOWAY**  
**BEEF**



**delicious.** ABC  
**PRODUCE AWARDS 2014**

**WINNER**

**Lizette & Allen Snaith**

[www.wbgbeef.com.au](http://www.wbgbeef.com.au)  
Ph: 0408 348 732

Find us on:







# The Greatley Stud

Proudly owned and operated by Eli, Eleonora and Lara Greatley situated at 2463 York-Quairading Road, Mawson East Beverley WA.

We are relative newcomers to the Belted Galloway farming life but that doesn't make us any less passionate than someone born into an already established farm business with generations of experience behind them.

We have travelled all over the east coast of this huge country educating ourselves on best practise by visiting already established farms to ensure our stock are well cared for and are of good stud quality.

Eleonora and I have attended stock handling courses and numerous farm field days here in WA. However our daughter Lara is attending Longreach Pastoral College in Queensland having completed Cert III in extensive livestock focusing on cattle and in 2016 she will be finishing her Diploma in Agriculture.

Our daughter chose to attend a College in Longreach to ensure she learnt best practice with stock in extremely dry/drought conditions. Lara admits that being a young woman in the agricultural industry isn't always smooth sailing, but it is extremely rewarding.

Compared to the lush green farms we had the pleasure of visiting over east, in NSW, VIC and SA, our part of the world here in Mawson WA is extremely dry. Despite our conditions the Belties seem to handle the heat and dry exceptionally well with no loss in production rates.

We have successfully bred six new additions to our herd this year with Voltaire, our bull, siring five heifers



and one bull calf which has since been steered. We are now introducing new blood lines with AI using straws purchased from reputable stud stock across Australia with an additional six new births expected mid-2016.

We look forward to expanding our knowledge, meeting new people in the industry and growing into a successful stud that shows, breeds and produces top quality cattle.





# 35 Years of Belties and Galloways

Peter & Sue Burgess

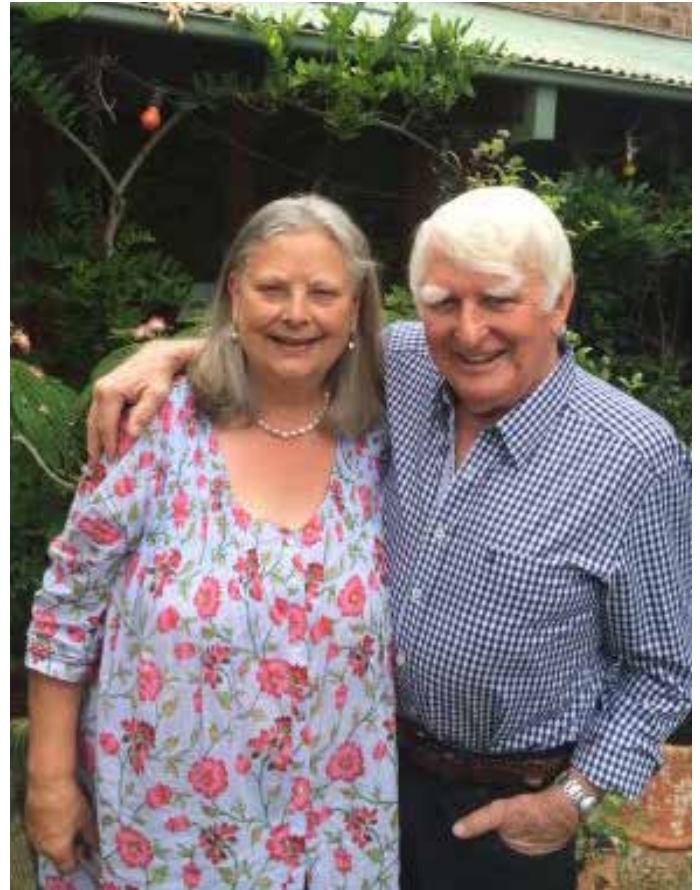
Well it all began about 35 years ago after returning from the U.K. We settled in Bathurst and Peter began his career as one of two Orthopaedic Surgeons on the western side of the Blue Mountains in the Central West. We set up in Bathurst and Peter started his practice in Lithgow and Bathurst. We met our dear friends Ken and Kath Doust almost immediately as Ken was Superintendent of Bathurst Base Hospital and we seemed to have a lot in common including medicine, vintage cars, antiques, junk, wine and a hankering for some acres and a few cows.

After a couple of years Ken and Kath moved on to Canberra where they bought a farm and some solid coloured Galloways and had a famous bull named Freddy Fudpucker. He was known to wander but Ken always managed to get him back by steering him by his tail through paddocks and fences.

We soon followed suit by buying 300 acres at Glanmire close to Bathurst, together with six prize Hereford steers. These boys disappeared almost immediately and we asked around the traps to see if anyone had them but no, they were gone. We reckoned they had been rustled. We put an ad in the local paper suggesting that they may have taken off down the Great Western Highway to Sydney - maybe for a holiday. No-one answered the ad so that was that. We then bought ten Galloways from a man called Gallop at the suggestion of Ken Doust and they stayed around the farm, they were too distinctive looking to risk pinching.

We had some fun and games with them especially when they contracted pink eye. Our local vet said that if they were his he would just let nature take its course. Being rookie cattle farmers we went along with the alternative suggestion of putting them to sleep and injecting antibiotic into the sclera of their eyes. We were assured they would be right after the procedure. Well that was fine but we had forgotten that they were going on a trip in a big truck and when the truckie arrived they were all fast asleep. He was totally amazed. We walked through them giving them a nudge with the boot and that was when my sore knee began. I wore the print of a hoof on it for at least two weeks.

Ken and Kath eventually moved to Mystery Bay, Narooma on the South Coast and they bought some lovely Belties. We decided we would have to have some of these beauties so we sold our solid Galloways and went on a trip to Victoria to visit the Grimshaws at their idyllic coastal farm where we chose our first six Belties which became the foundation



of the Wombledale Stud (No.2) at Peel, North of Bathurst.

We remember well the first little bull calf drowning in the dam and one heifer turning out to be a “freemartin” and would never produce a calf, consequently we had four calves that first year consisting of three bull calves and one heifer. The “freemartin” became Grandma to all the subsequent babies and was very happy in that role.

We were very keen in those first few years and, egged on by the Dousts and the Barklambs to start showing (and I might add they rarely showed their own cattle !!) we began showing at the Royal Canberra, Sydney Royal and the Royal Bathurst Show and were very proud to win Supreme Champion Cow at the Muster Down Under in Canberra 2002.

We met the Callaghans at the Canberra Show and we were very impressed with their daughter Louise who always showed their cattle wearing a red beret (Louise, not the cows). Louise was about 14 then and became our very successful cattle handler. She was very professional and had a great work ethic. Up at 5am every morning – what



a shock to us and the cows! We always kept gentlemen's hours. Belties have done very well at the Royal Bathurst Show and have been the feature breed there a couple of times, pulling in 30 to 40 entries. Various young people have helped us over the years and quite honestly we couldn't have done it without them.

We have in the past also shown our cattle at Orange, Blayney and Oberon. The last time we showed at Sydney Royal 2011 we won Champion Belted Galloway bull. Local schools have led our steers at the Sydney and various steer shows around the country side and they have generally done very well. We miss our old friends who put so much energy into the Belted Galloways – people like Eve and Paul Cullen, Jan Hall, "Barkie" Ian Barklamb who organized us so well at the Royal Canberra Shows.

Our Stud is "Fullblood" and we are proud to have provided cattle to several new studs around our region with Wombledale bloodlines with gratifying results. Unfortunately we are now getting a bit long in the tooth to chase cattle around the yards and will be cutting down on the herd. We will continue to take an interest in the breed and will help anyone who might be thinking of starting up a stud. We have had some great social times with the friends we have made over the years and hope the breed will continue to grow in Australia.

– Peter & Sue Burgess

## Benden Lodge Belted Galloway Stud

DAVID ZIEBELL

ABGA Member Number 597

2-18 Mundoolun Road Jimboomba, Queensland 4280 • Ph: 0402 160 296



Black Belted Galloways nurtured with care in the scenic foothills of the Strzelecki Ranges. Quality heifers, cows and calves available for sale. Visitors always welcome by appointment.

[www.clifden.com.au](http://www.clifden.com.au)



Clifden Farm Yarragon VIC 3823  
Lindy & Bill Smith • 0408 827 896  
[enquiries@clifden.com.au](mailto:enquiries@clifden.com.au)



## RED OCHRE BELTED GALLOWAY STUD

High Range NSW

Superior fullblood genetics used to produce cattle with desirable breed characteristics and traits.

Red Ochre semen licenced for Australia and New Zealand - POA.

**Enquiries Contact: Pam Brown 0434 100 280**  
**E: [pamjbrown@exemail.com.au](mailto:pamjbrown@exemail.com.au)**





# Back into Belties

Michelle Mann

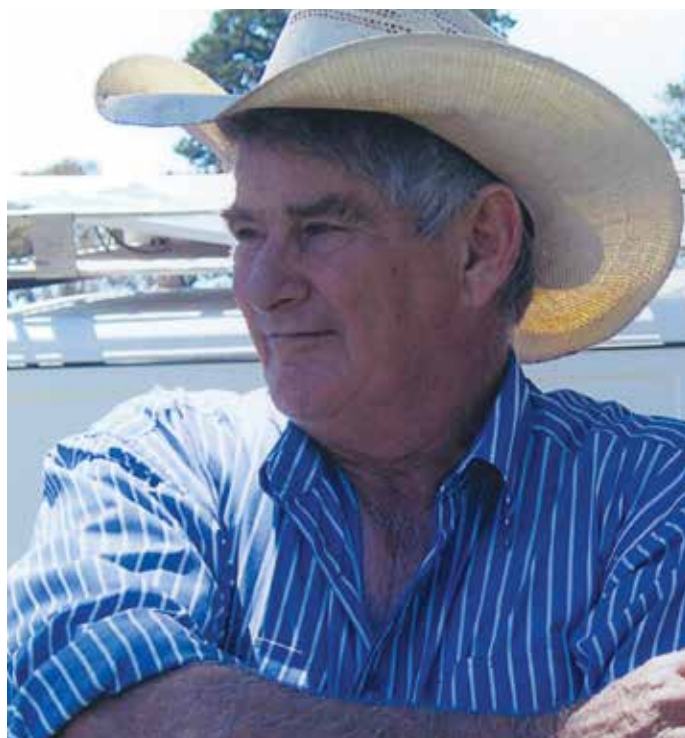
There aren't too many people in the show cattle business that haven't heard of cattle breeder and fitter, John Hutt of Cowra NSW.

Born in Bathurst, NSW, he grew up around country NSW where his father managed various properties, eventually settling in Rugby where John started out as a cattle groom at the young age of seven. His first Royal show was in 1957 and John hasn't missed showing cattle at Sydney Royal ever since.

Professionally, he was one of the first to start stud contract-feeding in the early 1970's. John's preparations over the years have produced countless Royal Show winners across many breeds.

It was back in 1990 when he prepared Belted Galloway cattle for Katherine Olsen that a keen interest sparked him starting his own stud and after championship successes at the Sydney, Canberra and Bathurst Royals with Katherine's cattle for a few years he saw an ad in *The Land* from Bob Madden (Budawang) who had Belties for sale. After inspection, John brought home three cows and so began his stud Kurrajong Park (156-ABGA) in 1997. Establishment bloodlines were Hawkshead, Ashleigh and Budawang.

With a small herd established, show preparation began for Canberra Royal and then onto Wodonga for the Belties feature show. Adding to his collection of Royal Champions, John purchased from Eve Cullen (Hawkshead) a heifer (Hawkshead Banda Ruth 3327-ABGA) just weaned. He took Ruth to Canberra Royal and came home with Junior Champion Female and then onto Sydney to win



Grand Champion Female. Ruth went on to win consecutive champion ribbons at Canberra and Sydney Royals in the following years, awarded Supreme Exhibit in Sydney with a calf at foot and was the first Belted Galloway female to win Grand Champion Female in Sydney three years running for John.

John was also responsible for collecting semen of Ashleigh Grason (461-ABGA) and establishing him in the market as a licensed AI Sire.

With a selective breeding program, John has sold and profited from his Belties. There was keen interest from city



Belted & White Galloways for sale • Bull leasing service

Stephen Habermann • Phone: 0428 722 733 • Email: [fairlightcattle@gmail.com](mailto:fairlightcattle@gmail.com)

[www.fairlightcattle.com.au](http://www.fairlightcattle.com.au)



investors and other cattle breeders at that time creating a demand for the breed.

After an extremely successful run with the Belties, around 2009 John stopped registering cattle and kept a small herd close to his heart until eventually they died out.

John's interest sparked again in 2013 after a conversation with John Blackwood (Ashrose) and a subsequent farm visit where he purchased some animals. One of these was a six year old cow who had never been handled. John brought her back to Cowra and within two weeks had taken her to Bathurst Royal to win Grand Champion Female.

A further visit to Tasmania with Jason Vials resulted in five females travelling across the Tasman to join the show team, and so began the Beltie bug!

John's resurgence in the breed was bought about firstly, by quality cattle and secondly, confidence in the Australian Belted Galloway Association and their visions for the breed into the future. He believes the Belties have attributes such as correct temperament, quality genetics, economically viable, great feed conversion resulting in high yielding carcasses, plus the skins are in demand. All these assets contribute to the longevity and success of the breed, of which he and his partner Barb are enjoying being part of again.

## APRIASH SEMEN AVAILABLE FOR THE FIRST TIME - GET SOME SIZE AND CLASS INTO YOUR HERD!

### • SHIRALEE SILVERADO – Sire of Champions - \$165 per straw

- Apriash Vista Interbreed champion at 23 months and 5 years of age at Royal Melbourne Show
- Apriash Waratah weighed 1022 Kgs at 3yrs 11 months

### • APRIASH TRISTAN – Full brother to Silverado - \$88 per straw

Both sire and dam of Silverado and Tristan were Interbreed Champions

### • APRIASH YALE – Sired by Mochrum Kingfisher - \$88 per straw

The sire of Apriash Delaware and Apriash Faranheit – Supreme Exhibit at Royal Melbourne Show

A minimum of 10 straws per order.  
Delivery extra.



Apriash Faranheit

**THREE STANDOUT SIRES ready to improve your herd!**

## APRIASH BELTED GALLOWAY STUD

Contact Trish Crowley:

131 Johnstons Road Barjarg 3723

Phone: 0438 331 700

Email: [apriash@bigpond.com](mailto:apriash@bigpond.com)



# IRONBARK

*Belted Galloway Stud*

**The home of Commercial and  
Stud Belted Galloway Cattle**



[www.ironbarkbeltedgallowaystud.com.au](http://www.ironbarkbeltedgallowaystud.com.au)  
[philippa.goninan@sundownpastoral.com.au](mailto:philippa.goninan@sundownpastoral.com.au)

# 0418 729 049

# 2015 *Show Champions*



**2015 Sydney Royal Show - Reserve Grand Champion Bull**  
Locklyn Jetsetter exhibited by John Hutt



**2015 Sydney Royal Show - Grand Champion Female**  
Ashrose Dina exhibited by John Hutt



# 2015 *Show Champions*



**2015 Royal Melbourne Show - Grand Champion Bull**  
Clanfingon Valentino (aka Harry) exhibited by Alison Hilli



**2015 Royal Melbourne Show - Grand Champion Female**  
Pine Gully Park Jess exhibited by Heazlewood Family



# 2015 *Show Champions*



**2015 Royal Canberra Show  
- Grand Champion Bull**  
**Ashrose Jaguar**  
exhibited by John Blackwood



**2015 Royal Canberra Show  
- Grand Champion Female**  
**Lochlyn Heather**  
exhibited by John Hutt



**2015 Royal Adelaide Show  
- Grand Champion Bull**  
**Grandview Joshua**  
exhibited by Anne and Adele Wilson



**2015 Royal Adelaide Show  
- Grand Champion Female**  
**Pine Gully Park Gwendolyn**  
exhibited by Stephen Vivian



# 2015 *Show Champions*



**2015 Royal Bathurst Show  
- Grand Champion Bull**  
**Longfield Danny**  
exhibited by Peter Munday



**2015 Royal Bathurst Show  
- Grand Champion Female**  
**Lochlyn Joy**  
exhibited by Peter Munday



**2015 Royal Geelong Show  
- Grand Champion Bull**  
**Grandview Joshua**  
exhibited by Anne and Adele Wilson



**2015 Royal Geelong Show  
- Grand Champion Female**  
**Grandview Kerry**  
exhibited by Anne and Adele Wilson

# Members

## Western Australia

### Petteet Park

Pamela Sealey and Kevin Johnson FULL  
PO Box 766, York 6302  
P: 08 9643 1003  
E: randebreedsaust@westnet.com.au

### The Greatley Stud

Eli, Eleonora and Lara Greatley FULL  
PO Box 2188, Warwick 6024  
P: 0418 906 422  
E: eleonoradbgreatley@gmail.com

## South Australia

### Baltimore

Samuel Vivian JUNIOR  
23 Rundle Road, Cowirra 5238  
E: samuel.vivian@bigpond.com

### Belmont Park Belted Galloway Stud

Hume Macdonald LIFE  
PO Box 344, Echunga 5153  
P: 0418 825 407  
E: belmpark@bigpond.net.au

### Bonnibelt

Tony and Joanne Kreher FULL  
PO Box 1511, Murray Bridge 5253  
152 Otto Road, Murray Bridge North 5253  
P: 0421 365 197  
E: belts2beef@yahoo.com.au

### Clanfingon

Judith McKinnon FULL  
168 Cyanide Road, Mt Torrens 5244  
P: 0410 840 827  
E: mckinnonjudith@internode.on.net

### Clan Ranald

Hume Macdonald & Debbie Painter FULL  
PO Box 344, Echunga 5153  
P: 0418 825 407  
E: belmpark@bigpond.net.au

### Inverryne

Ross Templeman LIFE  
82 Avenue Road, Clarence Gardens 5039  
P: 08 8293 7825

### Knockando

Stephen and Robyn Vivian FULL  
23 Rundle Road, Cowirra 5238  
P: 0429 999 534  
E: knockando@bigpond.com

### Wilmac

KL Wilson and Hume Macdonald FULL  
PO Box 344, Echunga 5153  
P: 0418 825 407  
E: belmpark@bigpond.net.au

## Tasmania

### Edinburgh

Lachlan Prien JUNIOR  
502 Ecclestone Road, Riverside 7250  
P: 03 6327 1050  
E: lacho.doco@gmail.com

## Tasmania

### Heatherfield

Phillip and Jodie Horton FULL  
PO Box 368, Sorell 7172  
P: 0417 658 504  
E: heatherfield@bigpond.com.au

### Kermandi

Dion and Amy Robertson FULL  
PO Box 177, Geeveston 7116  
P: 03 6297 9999  
E: amyanddion@bigpond.com

### Kookaburra

Glen and Karen Prien FULL  
502 Ecclestone Road, Riverside 7250  
P: 0488 317 271  
E: glekar@bigpond.net.au

### Mountain Grove

Lyndon Stevenson FULL  
183 Mountain River Road, Grove 7109  
P: 0438 308 100  
E: lyndon.stevenson@whitelion.asn.au

## Queensland

### Benden Lodge

David Ziebell FULL  
2-18 Mundoolun Road, Jimboomba 4280  
P: 0402 160 296  
E: david.ziebell@bigpond.com

### Bella Vista

Bill De Maria FULL  
291 Fogg Road, Mt Samson 4520  
P: 0414 747 012  
E: daguilar\_rose@hotmail.com

### Cassaglen

David and Cheryl Skillington FULL  
322 Glen Road, Warwick 4370  
P: 0418 875 320  
E: cassaglen\_belties@bigpond.com

### Dallington View

Gary C Dallyn and Sarah J Elks FULL  
769 Maleny-Montville Road  
Balmoral Ridge 4552  
M: 0434 978 997  
E: gdallyn@hotmail.com

### Downlands College

Stephen Murrell School  
PO Box 250, Toowoomba 4350  
P: 0458 705 828  
E: sjsmurrell@gmail.com

### Fairlight

Stephen Habermann FULL  
PO Box 2941, Nerang 4211  
P: 0428 722 733  
E: fairlightcattle@gmail.com  
W: fairlightcattle.com.au

### Freedom Rise

Baden Geeves and Raymond Cross FULL  
12340 D'Aguilar Highway, Yarraman 4614  
P: 0417 859 799  
E: freedomrise@bigpond.com

## Queensland

### Granite Belt

Neill and Susan Gauld FULL  
34 Lanham Avenue, Grange 4051  
P: 0432 203 127  
E: ngauld@optusnet.com.au

### Hanging Rock

Glen & Elizabeth Hutchison FULL  
1189 Rossmore Road, Kilkivan 4600  
P: 07 5484 1555  
E: hutchisonfamily@skymesh.com.au

### Highlander

Mervyn Newlands LIFE  
486 Hirstglen Road, Hirstglen 4359  
P: 0427 931 927 Janet  
0447 778 266 Mervyn  
E: newlandsjanet@bigpond.com

### Ironbark

Philippa Goninan FULL  
329 Monaco Street, Broadbeach Waters 4218  
P: 0418 729 049  
E: philippa.goninan@sundownpastoral.com.au

### Lown Brae

Colin and Raeline Walker FULL  
113 Love Road, Vale View 4352  
P: 0428 730 218  
E: lownbraefarm@bigpond.com

### Springbrook

Rob Craig FULL  
73 Velvet Downs Road, Springbrook 4213  
P: 0412 755 300  
E: rob@bullswoolpark.com

### Warrina Park

Jan Chant FULL  
PO Box 848, Murwillumbah 2484  
P: 0407 904 348  
E: janchant@hotmail.com

### Wattavue

Ken and Peta Ware FULL  
1687 Dayboro Road, Dayboro 4521  
P: 07 3425 1994 or 0409 004 470  
E: petaken1@bigpond.com

### Yelkar

Veronica and Darren Rackley FULL  
PO Box 167, Rosewood 4340  
P: 0408 015 771  
E: rackleyv@bigpond.com

## Victoria

### Annies Lane

Annie Bennett FULL  
PO Box 191, Rye 3941  
P: 0418 581 721  
E: annieb35@gmail.com

### Apriash Belted Galloway Stud

Brendan and Patricia Crowley FULL  
131 Johnston's Road, Barjarg 3723  
P: 0438 331 700  
E: apriash@bigpond.com



## Victoria

### Ashleigh Park Belted Galloways

Ashleigh Michael FULL  
8355 Bass Highway, Leongatha 3953  
P: 0428 307 250  
E: ashleigh\_michael@yahoo.com.au

### Badgers Keep

Brian and Renee Ellis FULL  
158 Mahers Road, Lancefield 3435  
M: 0428 130 737  
E: rellis9@bigpond.com

### Ballanbrae

Kay Dawson FULL  
185 Andersons Road, Barabool 3221  
P: 0407 896 665  
E: ballanbrae2@bigpond.com

### Balnarring Farm

468 Stumpy Gully Road, Balnarring 3926 FULL  
P: 0419 337 023  
E: sharon@eventers.com.au

### Baronga Park

Jill Archer FULL  
101 Harrisons Road, Dromana 3936  
P: 0434 479 348  
E: jillarcher@optusnet.com.au

### Brookvale

B & S van Eyle FULL  
PO Box 223, Malmsbury 3446  
P: 0412 546 737  
E: bve.sve@gmail.com

### Bunyip River

Robert English FULL  
790 Main Drain Road, Bayles 3981  
P: 0418 365 361  
E: english@netspace.net.au

### Heath Cameron

310 Craigie Road, Mount Martha 3934 JUNIOR  
P: 0412 141 341 (Dad)  
E: cameronpatterns@iprimus.com.au

### Campaspe

Julie Oberin and Ian Tulloch FULL  
PO Box 128, Axedale 3551  
P: 0419 539 346

### Carinya Stud

Terry Cliff LIFE  
2115 Hendy Main Road, Freshwater Creek 3217  
P: 0427 676 407

### Clan Woolfe

Cameron Woolfe FULL  
PO Box 2398  
Bakery Hill Vic 3354  
M: 0409 190 776  
E: cameron.woolfe@gmail.com

### Clifden

Lindy Smith FULL  
426 Yarragon-Leongatha Road, Yarragon 3823  
P: 0408 827 896  
E: enquiries@clifden.com.au

### Culbrae

Robert Lucas FULL  
156 Arthur Street, Fairfield 3078  
P: 0402 082 092  
E: rob@unigate.com.au

## Victoria

### Cumbria Partners

Stanley Robinson LIFE  
80 Woodnaggerak Road, Buangor 3375  
P: 03 5349 7321

### Steve Davis

93 Baum Road, Ryanston 3992 COMMERCIAL  
P: 0429 096 887  
E: steveallisondavis@hotmail.com

### Robert Deboer

480 Lustia Park Road, Hoddles Creek 3139 COMMERCIAL  
P: 0419 564 735  
E: robdeboer@bigpond.com

### Ross Dickie

PO Box 5069, Laburnum 3130 ASSOCIATE  
P: 039878 9741  
E: rosslain1@bigpond.com

### Drysdale

Joe Spiteri FULL  
Spiteri Properties  
50 Reserve Road, Drysdale 3222  
P: 03 5253 1073/0415 431 889  
E: jcspteri@yahoo.com

### Esentee Waters

Tracey Waters FULL  
185 Forrest Drive, Nyora 3987  
P: 0423.695.330  
E: esenteewaters@gmail.com

### Forest Brow Belties

P Anne Edwards FULL  
PO Box 153, Boolarra 3870  
P: 0407 055 177  
E: anneedwards4@bigpond.com

### Four Winds Belted Galloway Stud

Virginia and David Jackman FULL  
355 Slade Hill Road, Hazel Park 3966  
P: 0419 307 941  
E: vjackman99@hotmail.com

### Glen Junor

Trent McCamley  
284 Kilmore Road, Gisborne 3437  
P: 0448.900.990  
E: mccamleyfamily@bigpond.com

### Glenthompson Pastoral Co Pty Ltd

Ted Mann COMMERCIAL  
450 Larra Road, Derrinallum 3325  
P: 0418 368 694  
E: admin@glenthompsonpastoral.com.au

### Glenmeritt Belted Galloways

Trevor Campbell FULL  
PO Box 153, Boolarra 3870  
P: 0402 346 755  
E: ztctdc12@gmail.com

### Glenblairie

AJ and EA Eyles FULL  
589 Williams Road, Kooroocheang 3364  
P: 0428 329 076  
E: arie@activ8.net.au

### Grandview

Anne and Adele Wilson FULL  
158 Mt Blackwood Road, Myrniong 3341  
P: 0418 139 621  
E: grandview@harboursat.com.au

## Victoria

### Grayden Park

John McQuay FULL  
107 Graydens Road, Tuerong 3915  
P: 0412 322 297  
E: jvictorm@iprimus.com.au

### Gum Tree Lane

Karen Barnes FULL  
PO Box 348, Somerville 3912  
P: 0412 347 233  
E: gary.karen3@bigpond.com

### Alexander Heatly

565 Ross Creek Haddon Road, Haddon 3351 COMMERCIAL  
P: 03 5342 5254

### Hillmartin Grove

Colin Hall FULL  
92 Hillmartin Road, Diamond Creek 3089  
P: 0414 846 160  
E: thedesignery@ozemail.com.au

### Jalaway

Alison Hilli and Neale Vorbach FULL  
105 River Connection Road, Willow Grove 3825  
P: 0429 796 586 (Alison)  
0418 515 013 (Neale)  
E: jalaway@live.com.au

### Karandrea

Robby and Jan Davidson FULL  
RSD, Bingenwarri 3966  
P: 03 5185 1341  
E: karandrea@skymesh.com.au

### Koralea Belted Galloways

Jody and Lorna Andrews FULL  
80 Woodnaggerak Road, Buangor 3375  
P: 03 5349 7321

### Landleben

Paul and Helen Hibbins FULL  
PO Box 684, Ocean Grove 3226  
P: 0414 253 481  
E: dinobyte1@dodo.com.au

### Christine & Stephen Little

350 Mitchell Road, Kialla 3631 COMMERCIAL  
P: 0408 102 654  
E: thelittles@mcmedia.com.au

### Lytton Grange

Andrea Tierney FULL  
290 Grubb Road, RSD Drysdale 3222  
P: 0438 563 804  
E: paul@intricut.com.au

### Manoora Park

Bill and Alison Virtue FULL  
3565 Mount William Road, Tatyoon 3378  
P: 035354 0650  
E: wvirtue@activ8.net.au

### Montrose

Brien and Judy Cohn FULL  
25 Kingsbury Lane, Wauron Ponds 3221  
P: 03 5241 8003  
E: judycohn@yahoo.com

### Mukwonago

Jarrod Howlett FULL  
171 Lacys Road, Cambrian Hill 3352  
P: 0403 620 112  
E: jarrod@howlett.com.au

## Victoria

### Newsome

Chris and Kim Newsome FULL  
2082 Ballan-Merideth Road, Mt Wallace 3342  
P: 0427 902 948  
E: newsomebeltedgalloway@gmail.com

### Oberon Park Miniatures

Damien and Carmela Pollock FULL  
232 Eramosa Road West, Moorooduc 3933  
P: 03 5977 6644  
E: oberonpark@opel.com.au

### Pennygreen

Arthur and Alison Adams FULL  
587 Riversdale Road, Camberwell 3124  
P: 0412 536 737  
E: adamsqc@vicbar.com.au

### Pine Gully Park

Heazlewood Family FULL  
735 Purvis Road, Yallourn North 3825  
P: 0431 144 347  
E: pinegullypark@bigpond.com

### Sara & Alister Safstrom

COMMERCIAL  
770 Heathcote Rochester Road, Mt Camel 3523  
P: 03 5433 6359  
E: sjfm21@hotmail.com

### Shiralee Belted Galloways

Rick and Cheryl Cruff LIFE  
6 Coppin Crescent, Shepparton 3630  
P: 0417 052 191  
E: ccruft@bigpond.net.au

### Siamo

Noel and Amanda Afflitto FULL  
386 O'Gradys Ridge Road, Foster 3960  
P: 0411 478 744  
E: Siamo.farm@gmail.com

### Silvan Park

Hettie Biersteker FULL  
50 Wilkens Lane, Silvan 3795  
P: 0488 379 675  
E: hettieandandre@bigpond.com

### Stone Forge

Katherine McLauchlan FULL  
40 Seaview School Road, Seaview 3821  
M: 0467 516 792  
E: kayne.blueridge@dcsi.net.au

### Strathnaver

Rob and Leonie Mackay LIFE  
66 Simson Street, Carisbrook 3464  
P: 03 5464 1243  
E: greenvalleychevon@hotmail.com

### Squires Block

Gail Lloyd FULL  
PO Box 314, Surrey Hills 3127  
P: 0417 277 678  
E: lloydzone@gmail.com

### Dennis and Brenda Swan

FULL  
115 Leongatha North Road, Leongatha 3953  
P: 0418 389 909  
E: denniss@omni.net.au

### Terrafirma Springs

Benjamin Morrissey FULL  
51 Marine Parade, Hastings 3915  
M: 0448 769 627  
E: beca113@hotmail.com

## Victoria

### Twin Peaks Belted Galloway

Dianne P Woolfe FULL  
PO Box 1503  
Bakery Hill 3354  
M: 0435 791 198  
E: di.woolfe@gmail.com

### Warialda Belted Galloways

Allen Snaith FULL  
130 Ryans Road, Clonbinane 3658  
P: 0408 348 732  
E: info@wbgbef.com.au

### Weorona Vale

Colin Andrew Butler FULL  
PO Box 128, Tooradin 3980  
P: 0428 331 112  
E: colin.butler@obrienrealestate.com.au

### Whisky Hill

Trent Parsons FULL  
PO Box 512, Hurstbridge 3099  
P: 0438 082 681  
E: tbpconstructions@bigpond.com

### Wendon Park

Rachel J Alexander JUNIOR  
1028 Gorae Road, Gorae 3305  
P: 0468 938 953  
E: rj.alexander95@gmail.com

### Windy Hollow

Darren and Rebecca Avery FULL  
255 Rendells Road, Welshpool 3966  
P: 0423 062 972  
E: dazumoo@hotmail.com

### Wiseman Park

Kai Bakker JUNIOR  
10 Wiseman Road, Silvan 3795  
P: 0418 589 786  
E: jmbakker@bigpond.com.au

### Yeaburn

Dr Peter & Jenny Kudelka LIFE  
PO Box 747, Kew 3101  
P: 03 9819 4446

### Yileen

Graeme and Jennie Jackson FULL  
2410 Yarragon Leongatha Road, Hallston 3953  
P: 03 5668 5268  
E: g.jackson01@optusnet.com.au

## New South Wales

### 7 Hills

Peter Munday FULL  
160 Loudoun-Shand Road, Caloola 2795  
P: 0439 452 020  
E: pete87mun@gmail.com

### Ashrose

John and Kate Blackwood FULL  
PO Box 1815, Orange 2800  
P: 0418 246 433  
E: john@ashrosebeltedgalloways.com.au

### Bekadan

Merv and Beth Presland FULL  
1395 Nowendoc Road, Mt George 2424  
P: 0427 942 152  
E: jmpresland@bigpond.com

## New South Wales

### Bonnie Kine

Edward C Tobin FULL  
43 Christie Street, Raglan 2795  
P: 02 6337 3689

### Bonville Creek Galloways

FULL  
226 Bonville Station Road, Bonville 2441  
P: 0421 473 395  
E: accounts@coffsccs.nsw.edu.au

### Bracken Rae

John Newlands LIFE  
6523 Gwydir Highway, Cangai 2460  
P: 02 6647 4616  
E: brackenrae@bigpond.com

### Brindley Park

Ken and Libby Moore FULL  
PO Box 36, Merriwa 2329  
P: 0419 693 360  
E: libbymoore44@hotmail.com

### Calums Run

Louise McKay FULL  
10 Wassell Place, Macgregor 2615  
P: 0411 518 837  
E: meanddogs123@yahoo.com.au

### Carenne School

c/- Michael Auld SCHOOL  
158 Browning Street, Bathurst 2795  
P: 02 6331 1753  
M: 0448 218 646  
E: michael.auld@det.nsw.edu.au

### Cooee

Lisa Flynn FULL  
138 Bice Road, Leycester 2480  
P: 0411 592 314  
E: cowcastle@hotmail.com

### Croftdale Stables

Debra Karen Jeffery FULL  
1368 Dyraaba Road, Dyraaba 2470  
P: 0402 413 480  
E: croftdalestables@hotmail.com

### Crystall Waters

Marion and Bryan Watts FULL  
1021 Southarm Road, Bowraville 2449  
P: 0429 654 889  
E: bmwattsy@gmail.com

### Dawyck

Craig and Jan Veitch FULL  
PO Box 3139, Bemboka 2550  
P: 0417 622 794  
E: craig\_veitch@bigpond.com

### Diamond Springs

G and B Cooper FULL  
1/661 Military Road, Mosman 2088  
P: 0417 044 506  
E: glen@chotelb.com.au

### Dragonbridge Stud

Phillip and Vicki Morrow FULL  
PO Box 125, Billinudgel 2483  
P: 0428 893 079  
E: dragonbridge@activ8.net.au

### Sallianne Faulkner

ASSOCIATE  
PO Box 48, Sans Souci 2219  
P: 0419 474 623  
E: salliannef@optusnet.com.au



## New South Wales

### Georgious Galloways

Roxane McKellar FULL  
Levondale, 439 Blackville Road,  
Willow Tree 2339  
P: 0428 473 940 (Roxane)/0428 569 931 (Cam)  
E: cammckellar@bigpond.com

### Glenferrie

Dawn Collier LIFE  
Talmalmo via Albury 2640  
P: 02 6037 3228

### Greenville

Jane Hall and Peter Burrows FULL  
PO Box 2097, Bowral 2576  
P: 02 4872 1164  
E: tmfudge@bigpond.com

### Gunna Gunna Galloways

Cameron & Tracey Wells ASSOCIATE  
453 Bloom Hill Road, O'Connell 5042  
P: 02 6337 5042  
M: 0403 777 423  
E: jmtcwells@bigpond.com

### Harwood

Derrick Webster FULL  
2/192 Endeavour House,  
Captain Cook Crescent, Manuka 2603  
P: 0437 836 930  
E: harwood@skymesh.com.au

### Troy and Kate Hepburn

Foxtail Hill JUNIOR  
45 Figtree Lane, McKees Hill 2480  
p: 0429 935 571  
E: aliciafigtree@gmail.com

### Hutt River

Frederick John Hutt FULL  
PO Box 844, Cowra NSW 2794  
P: 0428 405 245

### Jandrew

Andrew Monaghan FULL  
49 Molong Street, Stuart Town 2820  
P: 0417 686 455  
E: thefrockmaker@yahoo.com.au

### Jenny Lind

David and Nerralie Boulton FULL  
PO Box 784, Orange 2800  
P: 02 6365 8380  
E: دنبولتون@bigpond.com

### Kalamata Galloway

506 Phills Falls Road FULL  
Mount Olive via Oberon 2787  
M: 0417 721 202  
E: mountainmeats@mail.com

### Golden Vale

Debbie Kavanagh FULL  
PO Box 3326, Rouse Hill 2155  
P: 0412 040 412  
E: debkav@tpg.com.au  
W: goldenvalebelties.com.au

### Hightop1

Pauline West & Heath Biffin FULL  
PO Box 4132, Nemingah 2340  
P: 0477 100 038  
E: Pauline@hightop.com.au

## New South Wales

### Hightop

Tim Aspinall JUNIOR  
1645 Nundle Road, Dungowan 2340  
P: 02 6769 4266  
E: Pauline@hightop.com.au

### Innis

Northholm Grammar School SCHOOL  
c/- Stellina Trestrail  
79 Cobah Road, Arcadia 2159  
P: 0414 963 504  
E: trestrails@northholm.nsw.edu.au

### Kimbriki

Dennis and Fae Griffiths FULL  
363 Kimbriki Road, Kimbriki 2429  
P: 0438 440 541  
E: dgriffis@westnet.com.au

### Kinghams Belted Galloway Stud

Donovan and Julie Callaghan LIFE  
87 Blacktown Road, Freemans Reach 2758  
P: 0413 702 093  
E: donovanc@superioraw.com.au

### Lochlyn

John and Amanda Seaman FULL  
PO Box 1147, Bathurst 2795  
P: 0499 777 117  
E: sidnewham@westnet.com.au

### Longfield

Ian Marjason FULL  
PO Box 101, Bungendore 2621  
P: 0418 427 593  
E: imarjason@bdn.com.au

### Lowick Farm

Angus and Michelle Wilson FULL  
68 Lue Road, Mudgee 2850  
P: 0409 619 268  
E: michellemudgee@gmail.com

### MRM Stud

Matthew Maiolo JUNIOR  
42 Handleys Lane, High Range 2575  
P: 0417 466 216  
E: johnmaiolo4@bigpond.com

### New England Belted Galloway Stud

Francie Maclean FULL  
Oakview, 701 Mulla Creek Road, Mulla Creek 2352  
P: 0407 660 334  
E: franciemaclean@bigpond.com

### Northwood

Gail and Derry Crisp FULL  
621 Old Coast Road, Dorrig North 2453  
P: 0428 293 419  
E: derrycrisp2@bigpond.com

### Nurrennyen

Greg Crease FULL  
206 Henry Parks Road, Parkesbourne 2580  
P: 02 4829 2385  
E: greg@nurrennyen.com.au

### Overdale

Neil and Debbie Hanlon FULL  
PO Box 261, Uralla 2358  
P: 0419 295 793  
E: neildebhanlon@bigpond.com

### Pardy's

John Engisch FULL  
512 Sandy Point Road, Windellama 2580  
P: 0411 349 555  
E: john@torchpublishing.com.au

## New South Wales

### Pee Dee Creek

Doug Thompson FULL  
PO Box 658, Gordon 2072  
P: 0419 237 608  
E: doug@thc.net.au

### Pyree Park

Scott Smeal FULL  
2408 Taralga Road, Goulburn 2580  
P: 0416 020 721  
E: scottss@activ8.net.au

### Duncan Rae

COMMERCIAL  
6 Tivoli Street, Mosman 2088  
P: 0414 697 166  
E: dairae@hotmail.com

### Red Ochre

Pamela Brown and John Maiolo FULL  
42 Handleys Lane, Mittagong 2575  
P: 0434 100 280  
E: pamjbrown@exemail.com.au

### Splendid

Nick Faseas FULL  
167 Private Access M1, Mulbring 2323  
P: 02 4938 0093  
E: nickolasjames@bigpond.com

### Stoneykirk Park

T and S Borowsky FULL  
PO Box 259, Ingleburn 2556  
P: 0418 696 335  
E: onitek@bigpond.com

### Tea Tree Flat

Greg and Anne Craven FULL  
16 Kirkoswald Avenue, Mosman 2088  
P: 0403 323 448  
E: cravenanne2@gmail.com

### The Keep

Toni and Chris Barry FULL  
10 Church Street, Burrawang 2577  
P: 0418 447 730  
E: barryster@selbornechambers.com.au

### Wee Belties

Paul and Phyllis Kay FULL  
366 Carnham Road, Fine Flower 2460  
P: 02 6647 2266  
E: weebelties@yahoo.com.au

### Windcrest Belted Galloways

J and P Ford FULL  
621 Stanhope Road, Stanhope 2335  
P: 02 4930 6067  
E: windcrestford@bigpond.com

### Wirrawilla

MA and AJ Rugendyke FULL  
15L Beni Forest Road, Dubbo 2830  
P: 02 6882 1131  
E: mruges@gmail.com

### Wombledale

Peter and Susan Burgess FULL  
PO Box 342, Bathurst 2795  
P: 0402 099 688  
E: wombledale@bigpond.com

### Yasabah

Clive Robert Allison FULL  
PO Box 3305, West Kempsey 2440  
P: 0405 114 545  
E: clive@monkhouse.com.au







# ABGA SEMEN LIST

## AI Approved Sires

<b>Ashleigh Grason</b>	Genetics Australia 03 5367 3888	\$22 per straw (Limited supply)	Black Belted
<b>Midfern Norman</b>	As above	\$22 per straw (Limited supply)	Black Belted
<b>Mochrum Huckleberry</b>	Chris McLroy at Agri-Gene Phone 03 5722 2666 Email: chris@agrigene.com.au	\$71.50 per straw	Red Belted
<b>Peppercorn Zula</b>	As above	\$22 per straw	Black Belted
<b>Du Rapide Legacy 17K</b>	Simon Legace Canada +1 405 799 5117 Email: durapide@ntic.qc.ca	POA	Black Belted
<b>Du Rapide Sherwood</b>	As above	POA	Black Belted
<b>Longfield Roberto</b>	Ian Marjason 02 6238 1576 imarjason@bdn.com.au	\$55	Black Belted
<b>Longfield Viper</b>	As above	\$55	Black Belted
<b>Cairnsmore Fergus 29GB0004</b>	ABS Australia 03 8358 8800 pamela.materowski@genusplc.com	\$55	Black Belted

## Privately owned licensed semen (permit required)

<b>Shiralee Moonshine</b>	Rick Cruff 0417 052 191 Email: ccruff@bigpond.net.au	\$25 per straw (Limited Supply) Sire permit \$100	Black Belted
---------------------------	--	---	--------------

## Privately owned unlicensed semen

<b>Bonnibelt Zakuska</b>	Tony & Joanne Kreher 0419 664 672 Email: belts2beef@yahoo.com.au	\$35 per straw	Red Belted
<b>Bonnibelt Gabriel</b>	As above	\$35 per straw	Red Belted
<b>Pine Gully Park Alto</b>	Kerry Heazlewood 0431 144 347 pinegullypark@bigpond.com	\$22 per straw	Black Belted
<b>Wilkamdai Giovanni (miniature)</b>	Cameron Woolfe 03 5334 0588 cameron.woolfe@gmail.com	POA	Black Belted



AUSTRALIAN  
**Belted Galloway**  
ASSOCIATION

---

[WWW.BELTEDGALLOWAY.ORG.AU](http://WWW.BELTEDGALLOWAY.ORG.AU)

---